



COLORADO

Prescription Drug  
Affordability Board

Division of Insurance

# Addendum to the 2023 Affordability Review Summary Report: Cosentyx

Drafted: June 13, 2025

Approved:

## Overview of the Data Miscategorization

Prescription Drug Affordability Board (“PDAB”, “Board”) staff were notified of a data miscategorization during the course of data validation in preparation for the Upper Payment Limit (UPL) rulemaking for Enbrel. Specifically, there was a miscategorization in the All Payer Claims Database (APCD) when a pharmacy benefit manager (PBM) submitted data to the APCD administrator, the Center for Improving Value in Health Care (CIVHC). The payer types examined during the original affordability reviews are: Commercial, Medicaid, and Medicare Advantage. The PBM submitted claims in which they categorized Medicare claims as commercial and commercial claims as Medicare. Staff validated the corrected data and presented the updated information to the Board at its meeting on [April 11, 2025](#). This document focuses on the corrected data for Cosentyx.

## Impacted Data Points

Due to the miscategorization of payer-type by the PBM, multiple data points were impacted. Staff presented the Board with corrected information for the following data points for Cosentyx:

- **Patient Count:** the number of patients utilizing the prescription drug in a year.
- **Average WAC per Course of Treatment:** the average wholesale acquisition (WAC) cost per course/period of treatment. This was presented as a range because the exact number is confidential.
- **Average Paid per Person (APPY):** the average amount paid for the drug by both (patients and payer) per person per year.
- **APPY - Plan Paid:** the average amount paid for the drug by the payer per person per year.
- **APPY - Out-of-Pocket (OOP):** the average amount paid for the drug by the patient per year.
- **Total Paid:** total amount paid by payers and patients for the drug within one year.
- **Total Patient Paid:** total amount paid by all patients for the drug within one year.

## Corrected Tables and Figures

Following sections are the corrected tables and figures for Cosentyx. The table and figure numbers correspond to the original [affordability review summary report](#) (ARSR). The corrected tables and figures will not consider outdated data and therefore do not include data from 2018.



**Table 2**

*Utilization of Cosentyx (All Lines of Business)*

| Drug Name | Corrected Data |      |       |       |
|-----------|----------------|------|-------|-------|
|           | 2019           | 2020 | 2021  | 2022  |
| Cosentyx  | 718            | 936  | 1,008 | 1,013 |

Table 2 shows the number of utilizers of Cosentyx by year from 2019 - 2022.

**Figure 1**

*Cosentyx Utilization by Payer Type*

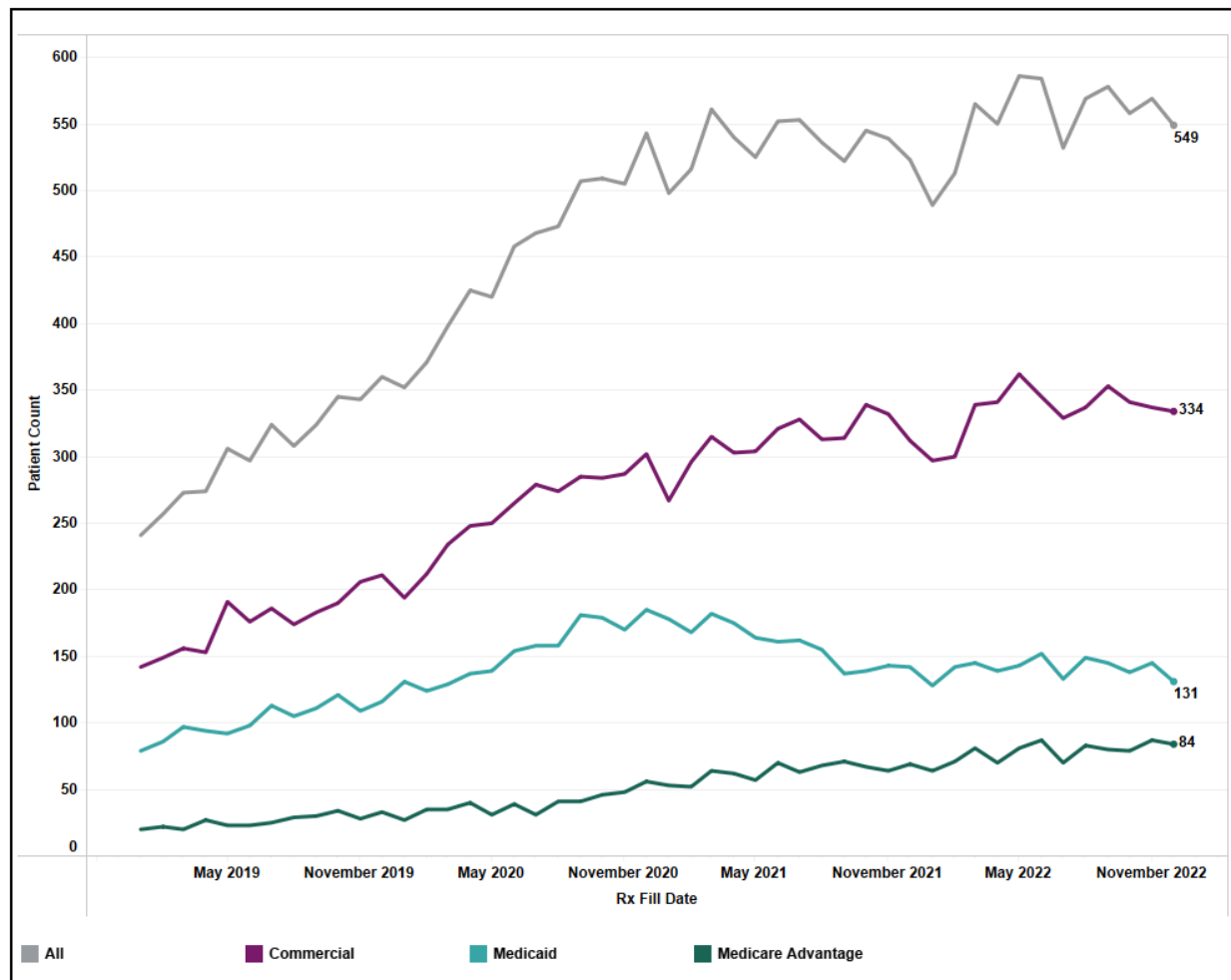


Figure 1 shows the number of patients who filled a prescription for Cosentyx each month between May 2019 and November 2022, where the purple line represents the number of commercially insured patients, the teal line shows the number of Medicaid patients, the green line shows the number of Medicare Advantage patients, and the gray line shows the total utilization in the Colorado APCD.



**Figure 2**  
*Insurance Information*

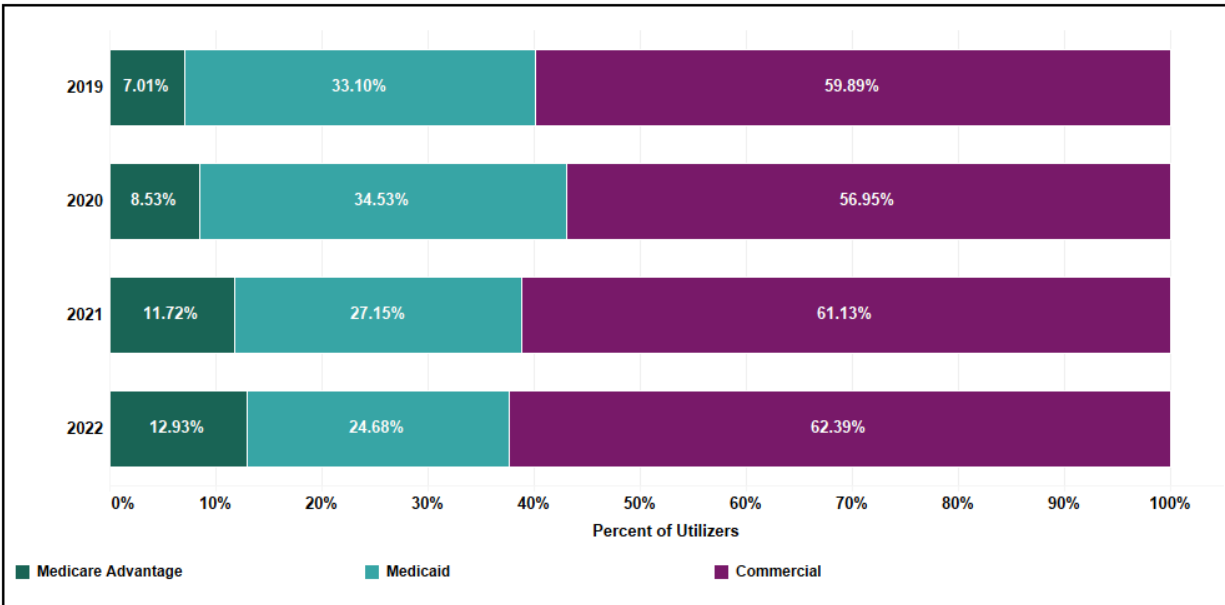


Figure 2 shows Cosentyx payer mix percentages from 2019 through 2022. This figure shows the percent of patients by payer type and year where green represents patients with Medicare Advantage, teal represents patients with Medicaid, and purple represents patients with commercial insurance. From 2019 through 2022, between 56.95% and 62.39% of Cosentyx utilizers were commercially insured.

**Table 5**  
*Utilization of Cosentyx and Identified Therapeutic Alternatives*

| Brand Name | Corrected Data |      |       |       |
|------------|----------------|------|-------|-------|
|            | 2019           | 2020 | 2021  | 2022  |
| Cosentyx   | 718            | 936  | 1,008 | 1,013 |
| Ilumya     | *              | *    | *     | *     |
| Skyrizi    | 86             | 253  | 527   | 941   |
| Stelara    | 792            | 970  | 1,272 | 1,512 |
| Taltz      | 223            | 318  | 880   | 1068  |
| Tremfya    | 116            | 154  | 279   | 418   |

Table 5 shows the number of utilizers of Cosentyx and therapeutic alternatives by year from 2019 - 2022.<sup>1</sup>

<sup>1</sup> An \* indicates 12 or fewer patients using that drug in that year.



**Figure 4**

*Insurance Information for Therapeutic Alternatives*

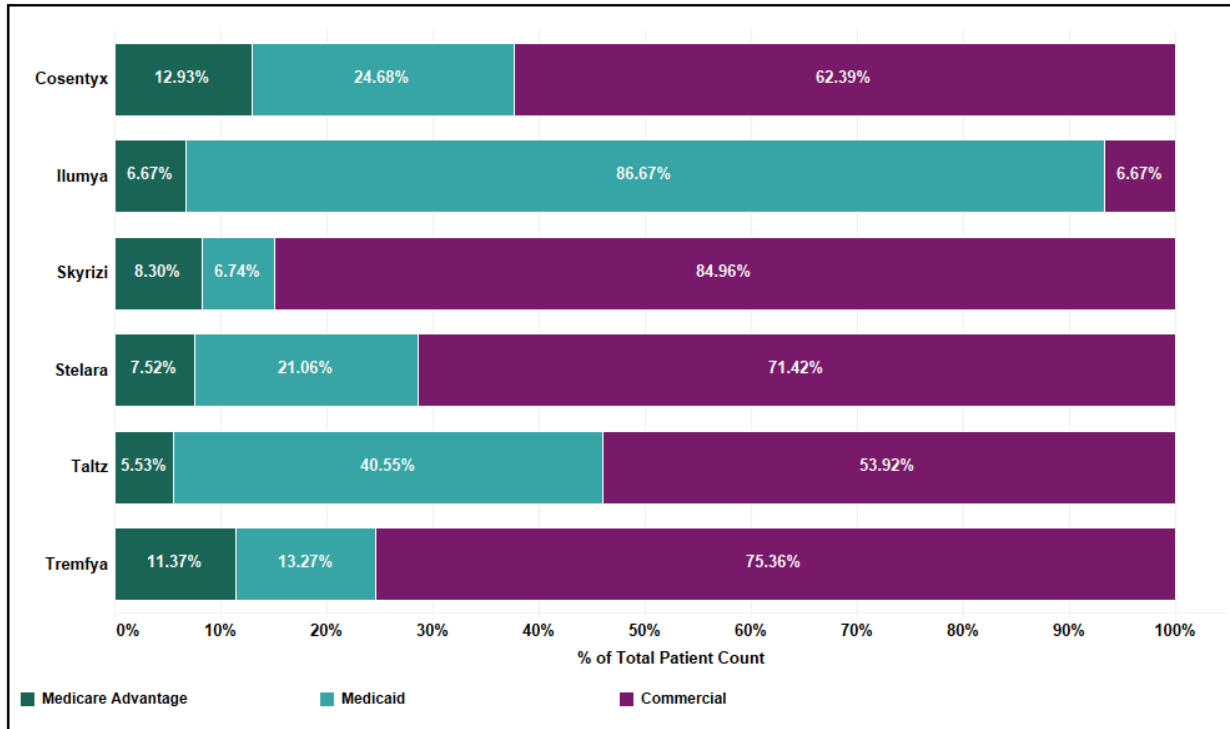


Figure 4 shows the 2022 payer mix for Cosentyx and its identified therapeutic alternatives. This figure shows the percent of patients by payer type and year where green represents patients with Medicare Advantage, teal represents patients with Medicaid, and purple represents patients with commercial insurance. Cosentyx had 62.39% of patients covered by commercial insurance, which was higher than two and lower than three of the identified therapeutic alternatives.

**Table 6**

*Cosentyx's 2022 Price & Cost Per Person Statistics*

| Price & Cost Per Person Statistics             | Corrected Data |
|--|----------------|
|  | Amount         |
| Average WAC per Course of Treatment Per Person | \$85k - \$95k  |
| Average Paid per Person                        | \$49,008       |
| APPY - Plan Paid                               | \$46,764       |
| APPY - Out-of-Pocket                           | \$2,202        |



**Table 7**

*Cosentyx's 2022 Statewide Price & Cost Statistics*

| Statewide Price & Cost Statistics | Corrected Data |
|-----------------------------------|----------------|
|                                   | Amount         |
| Total Paid Amount                 | \$49,644,897   |
| Total Plan Paid                   | \$47,372,398   |
| Total Medicaid Paid               | \$13,018,271   |
| Total Patient Paid                | \$2,230,934    |

**Figure 6**

*Average Commercial Out-of-Pocket Cost Comparison*



Figure 6 shows each out-of-pocket cost type for commercially insured individuals with Cosentyx in dark purple and its therapeutic alternatives by year. There is a light gray line that shows the average of the therapeutic alternatives as a comparison to determine if Cosentyx is more or less



## COLORADO

Prescription Drug  
Affordability Board

Division of Insurance

expensive than the average of its therapeutic alternatives. For example, the bottom right corner shows the average total out-of-pocket cost in 2022: Cosentyx was \$3,362, which is lower than all of the identified therapeutic alternatives, while the average across all therapeutic alternatives is \$4,669.

**Table 8**

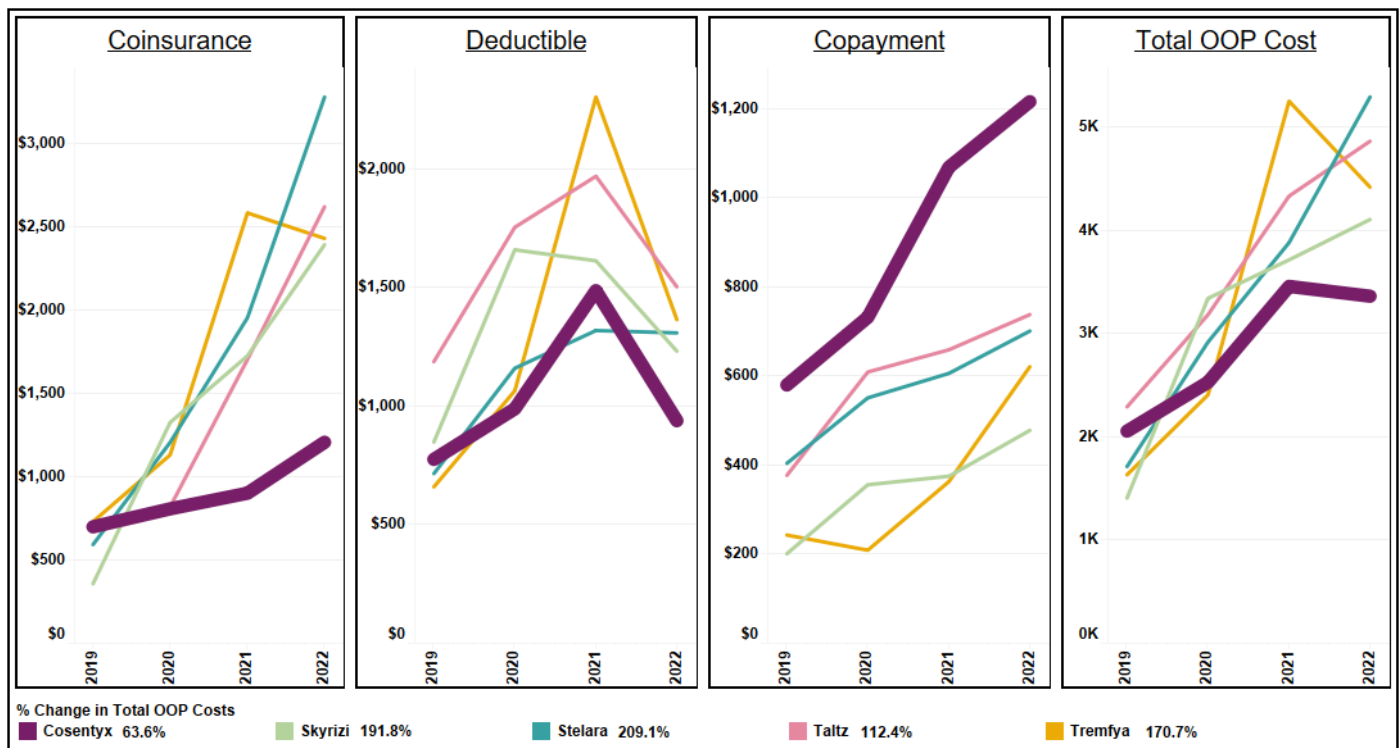
*Average Monthly Commercial Out-of-Pocket Cost Information in 2022*

|                                   | Corrected Data |        |         |         |       |         |
|-----------------------------------|----------------|--------|---------|---------|-------|---------|
|                                   | Cosentyx       | Ilumya | Skyrizi | Stelara | Taltz | Tremfya |
| <b>Average Total OOP Cost</b>     | \$421          | \$390  | \$1,023 | \$919   | \$581 | \$889   |
| <b>Average Coinsurance Amount</b> | \$150          | \$0    | \$591   | \$572   | \$318 | \$486   |
| <b>Average Copay Amount</b>       | \$151          | \$390  | \$116   | \$122   | \$89  | \$121   |
| <b>Average Deductible Amount</b>  | \$120          | \$0    | \$315   | \$225   | \$174 | \$282   |
| <b>Days Supply</b>                | 27             | 84     | 55.75   | 49      | 28    | 44      |

Table 8 shows average monthly out of pocket expenditures for individuals who are commercially insured.

**Figure 7**

*Changes in Copay Amounts by Year and Drug 2019-2022*



**COLORADO****Prescription Drug  
Affordability Board**

Division of Insurance

Figure 7 shows the annual change in the annual average out-of-pocket amounts comparing Cosentyx (dark purple) to its therapeutic alternatives. Below the graph, the percent change in total out-of-pocket costs from January 2019 - December 2022 for each drug is indicated.

Cosentyx had the lowest total out-of-pocket cost and the lowest increase in total out-of-pocket costs with a 63.6% increase.

**Table 9***Annual Utilization and Expenditures*

|                                | Corrected data |              |              |              |
|--------------------------------|----------------|--------------|--------------|--------------|
|                                | 2019           | 2020         | 2021         | 2022         |
| <b>Patient Count</b>           | 718            | 936          | 1,008        | 1,013        |
| <b>Total Paid</b>              | \$28,893,718   | \$42,011,361 | \$47,393,808 | \$49,644,897 |
| <b>Average Paid Per Person</b> | \$40,242       | \$44,884     | \$47,018     | \$49,008     |
|                                | \$903,303      | \$1,414,210  | \$2,241,052  | \$2,230,934  |
| <b>Total Patient Paid</b>      |                |              |              |              |
| <b>Average OOP</b>             | \$1,854        | \$2,272      | \$3,007      | \$2,885      |

Table 9 shows the number of patients using Cosentyx, the total amount paid for Cosentyx, the average paid per person, the total amount that patients paid, and the average amount that each patient paid.



**Figure 10**  
*Monthly Utilizers for Cosentyx and Therapeutic Alternatives*

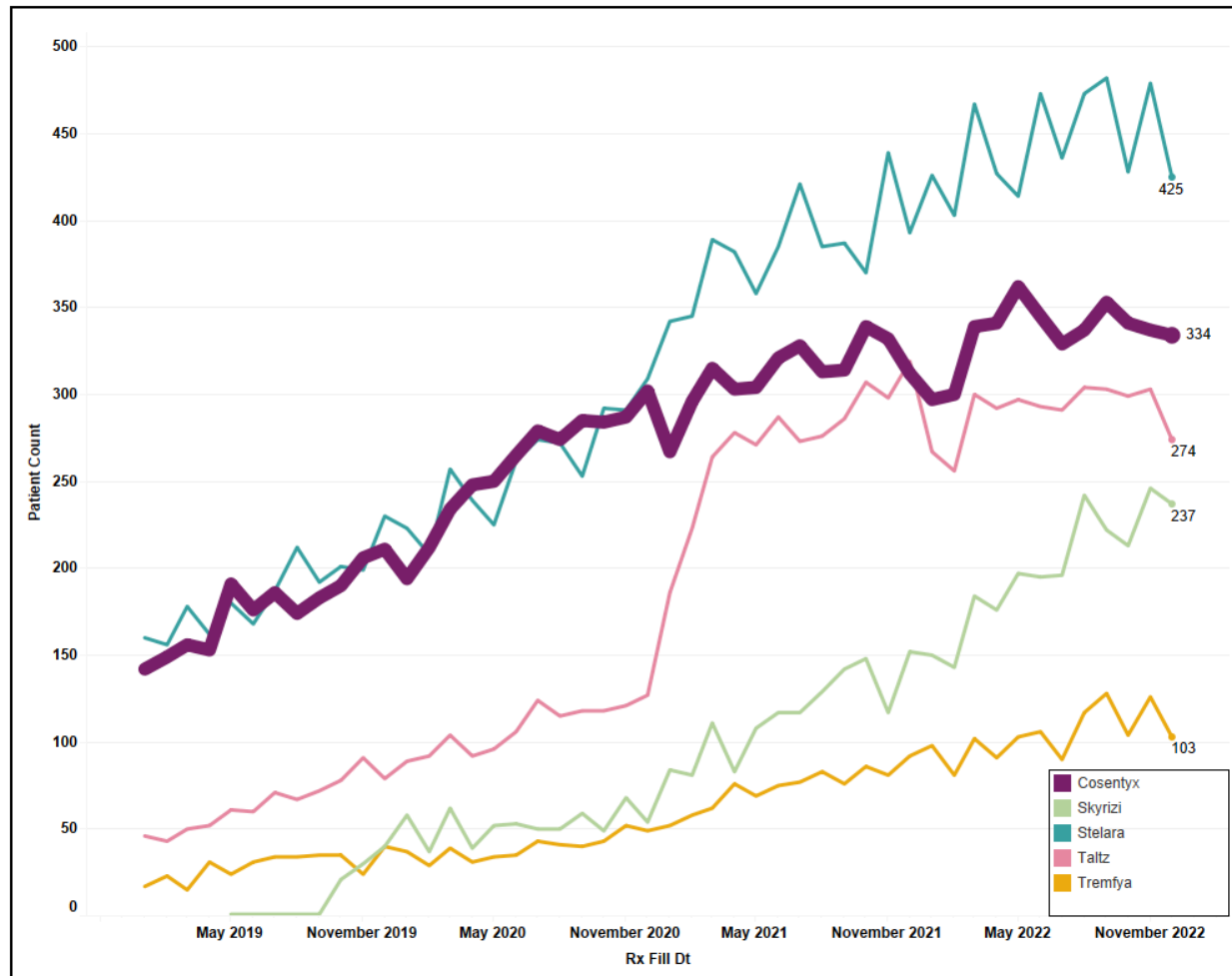


Figure 10 shows the monthly number of commercially insured utilizers of Cosentyx and therapeutic alternatives. Utilization of Cosentyx has increased from May 2019 to November 2022 and it is the second highest utilized drug when compared to its therapeutic alternatives.





**Figure 11**  
*Monthly Total Paid and Average Total Paid*

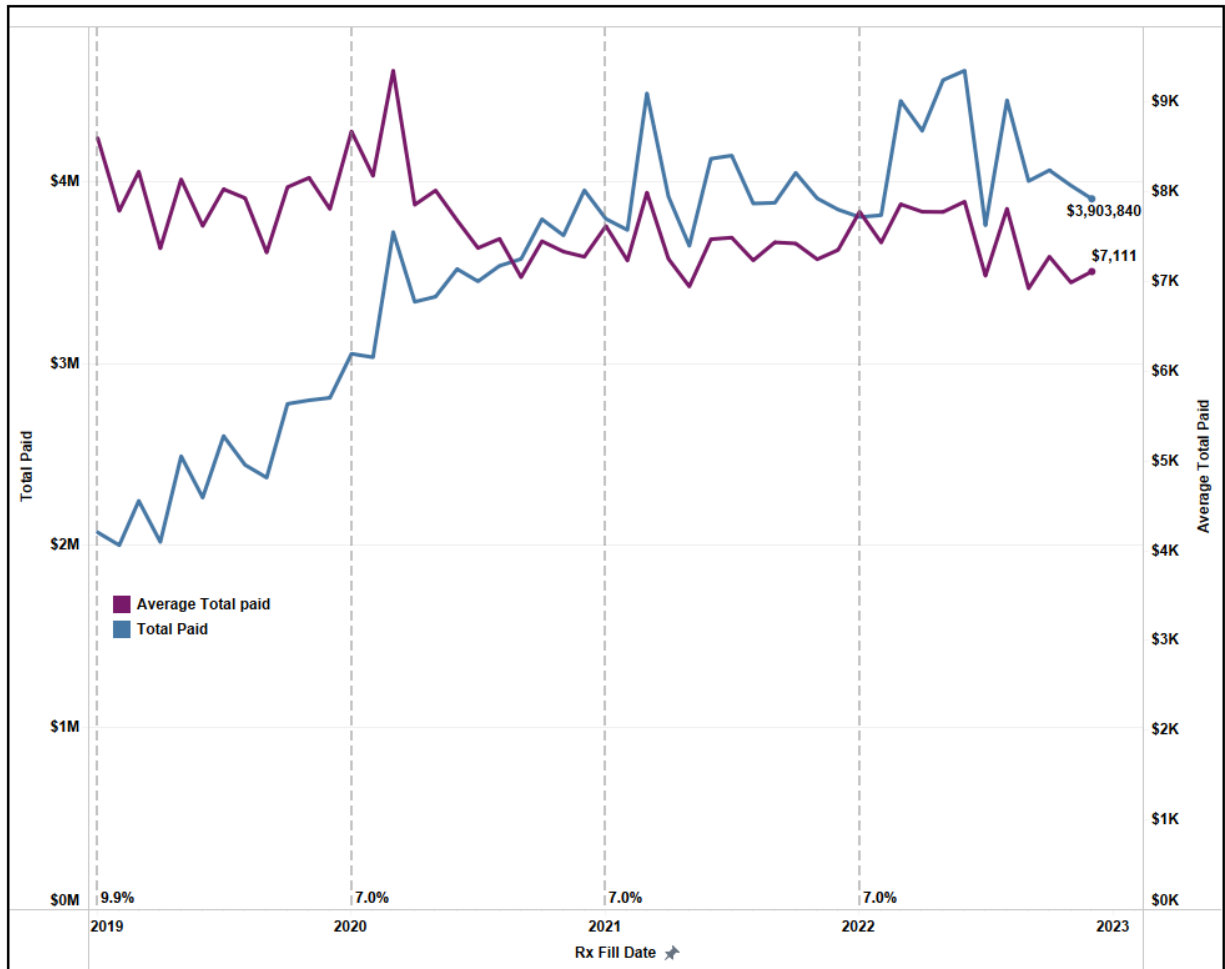


Figure 11 shows the monthly total paid with the blue line (left axis) and the monthly average paid per person with the purple line (right axis) with vertical dotted lines representing when there were increases in WAC with the magnitude of the increase written to the right of the line. There is no visible correlation between the WAC change and the corresponding change in the APCD paid amounts. During this time frame, the number of patients using Cosentyx increased from 718 in 2019 to 1,013 in 2022.